



Trail Lake:

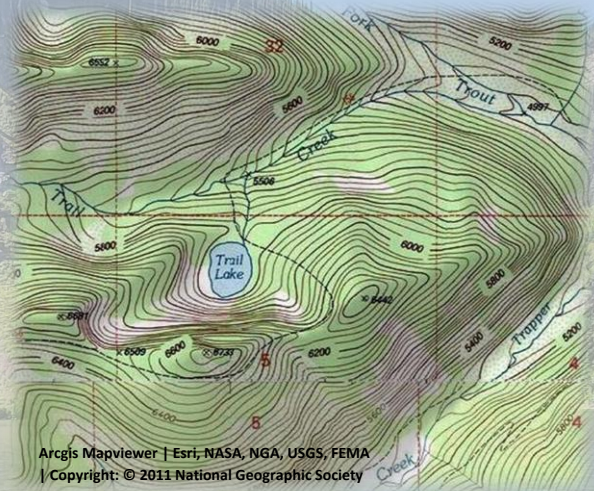
Difficulty: *Classic*

Distance: 2.25 miles

Trailhead Elevation: 4700 feet; **Trailhead Lat/Long:** 47° 0'22.69"N / 115° 0'41.17"W

Lake Elevation: 5770 feet; **Lake Lat/Long:** 47° 0'22.25"N / 115° 2'31.41"W

Getting There: At Superior, take Diamond Road east past the Town Pump Gas Station for 6 miles; passing the Bark mill and the Magone Ranches to the end of the pavement where the road changes to Trout Creek Road (#250). Continue up Trout Creek Road for 12 miles and turn left on Road #7813 for 2 miles. Take a left



Trail Lake 2021



at the 4th switchback down the hill on Road #388 for 1 mile to the end of the road and trailhead.

The trail #156 starts as an old road that was drivable by a regular pickup truck when I was growing up. There are a couple of small crossings along the trail. The trail climbs moderately for a little over a mile until the old road ends and becomes a single track. Look for a primitive step trail that heads down to a set of falls not too far into the hike. It is quite the climb down to the falls; there are 20-foot ropes to help get down to the falls. It would be difficult to get down the trail without them.

The trail #156 starts as an old road that was drivable by a regular pickup truck when I was

growing up. There are a couple of small crossings along the trail. The trail climbs moderately for

a little over a mile until the old road ends and becomes a single track. Look for a primitive step

trail that heads down to a set of falls not too far into the hike. It is quite the climb down to the falls; there are 20-foot ropes to help get down to the falls. It would be difficult to get down the trail without them.



Trail Lake 2023



Waterfall Along the Trail





The trail then climbs more steeply for the next mile with several switchbacks intermixed with some nice level stretches. The last .25 miles to the lake after the final creek crossing are the steepest part of the hike. There is plenty of water available for your dog along the trail.

At the Lake: *Fishing at the lake consists of Brook Trout and historically it was good fishing. The shoreline is very brushy and there are large areas of logs that block casting and are too waterlogged to walk out on. I would suggest a small raft is a*

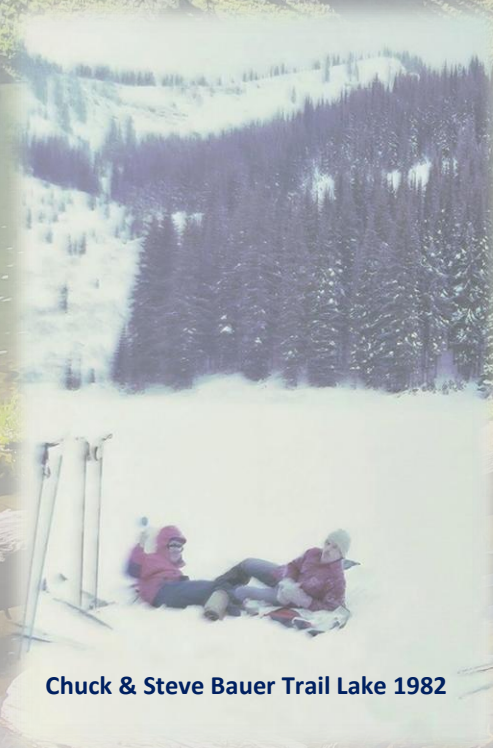


Trail Lake 2023

must to really fish the entire lake. There used to be several handmade log rafts available at the lake, but the logs used for them have rotted away over the years and I didn't see any the last time I visited the lake.

There are several large campsites around the outlet. It is an easy hike in, so it does get some large parties that leave significant impact. The map indicates that you can access Trail Lake from the state line trail, but I have never hiked that route before. I understand it to be in poor condition, but there is a trail project in 2025 to refresh the tread and brush out the trail. This project was partially completed in 2025.

The first time I went into the lake was with the Boy Scouts when I was 11 or 12.



Chuck & Steve Bauer Trail Lake 1982

Chuck & Steve Bauer and I skied into the lake one winter day in the early 80's. If you hit this lake at the right time late in the summer Huckleberry's are prominent along the trail and mellow sidehills towards the outlet stream.



Kelly at Trail Lake 2025





Lakes of the Great Burn & More

I fished from the main Trout Creek (bridge) to the trailhead when I was in my teens. It was a brushy and sometimes a hard climb up the creek, but I did well that day.



Waterfall Along the Trail



Trail Lake 2021



Waterfall Along the Trail



Trail Lake 2025

